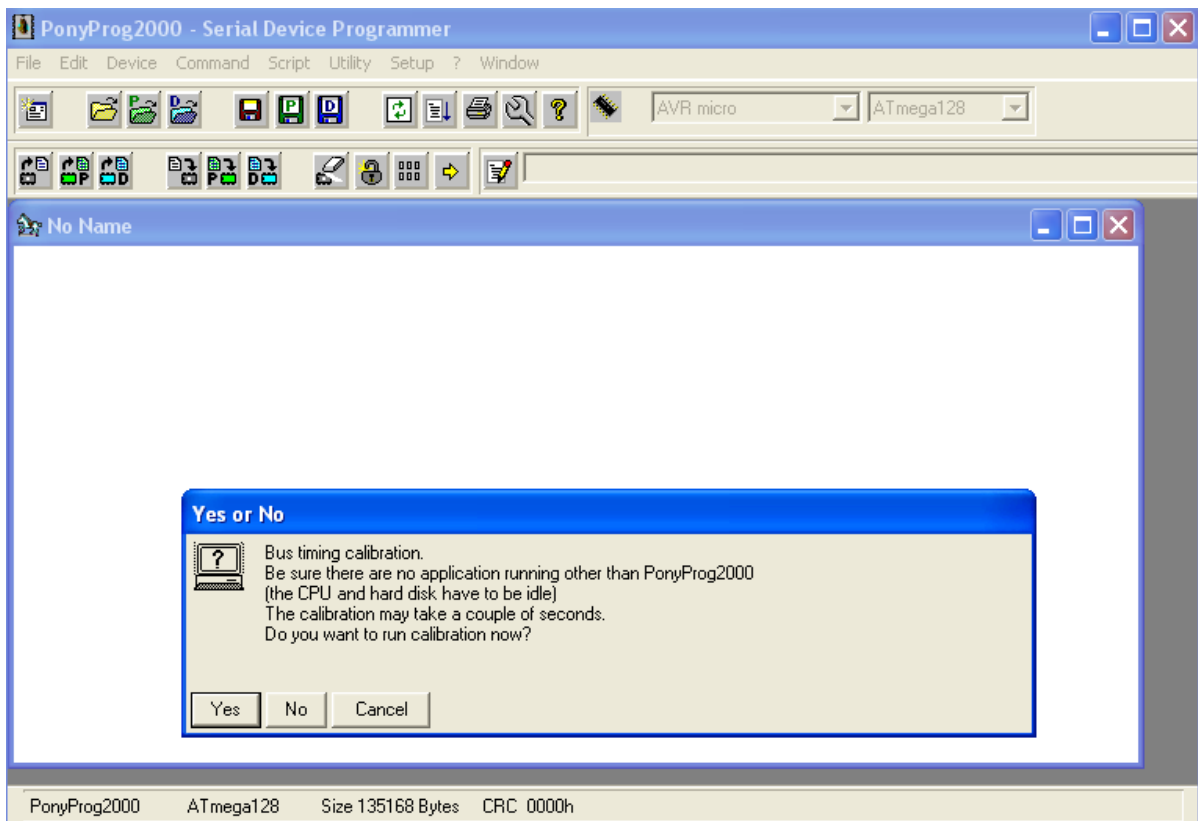
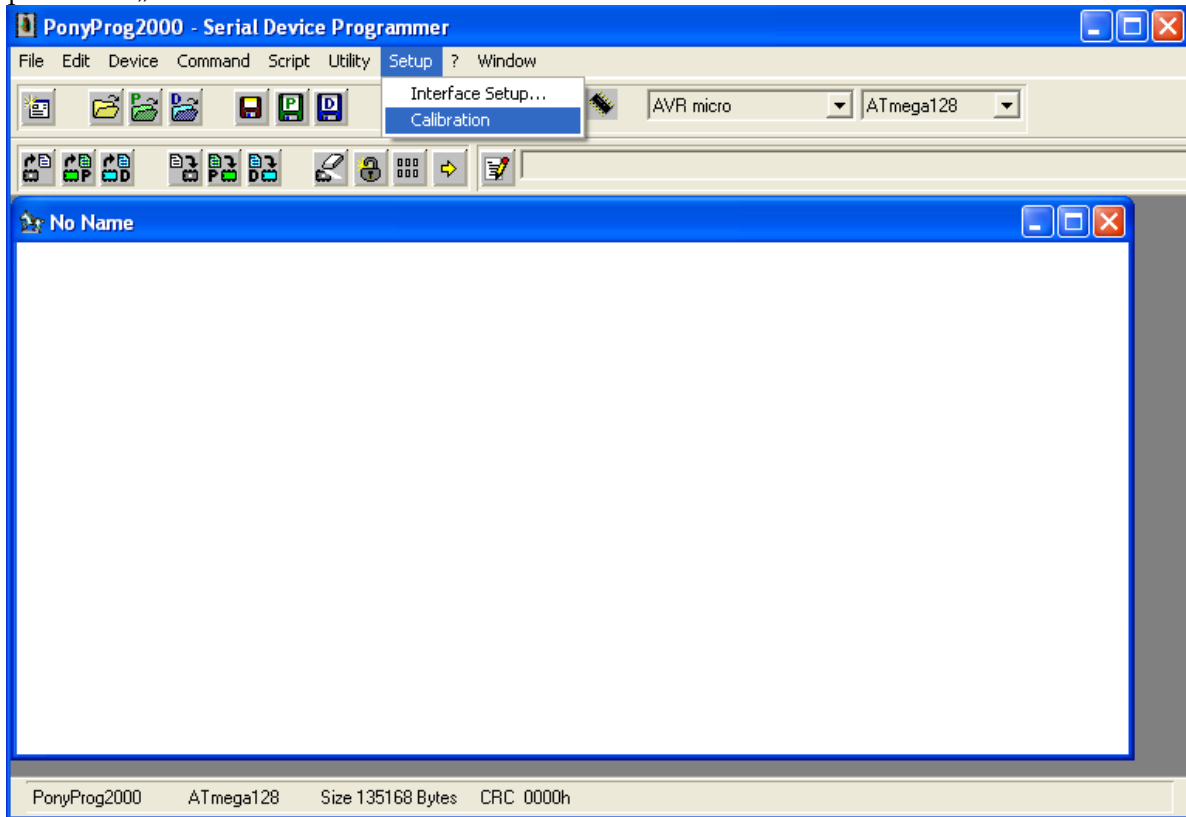
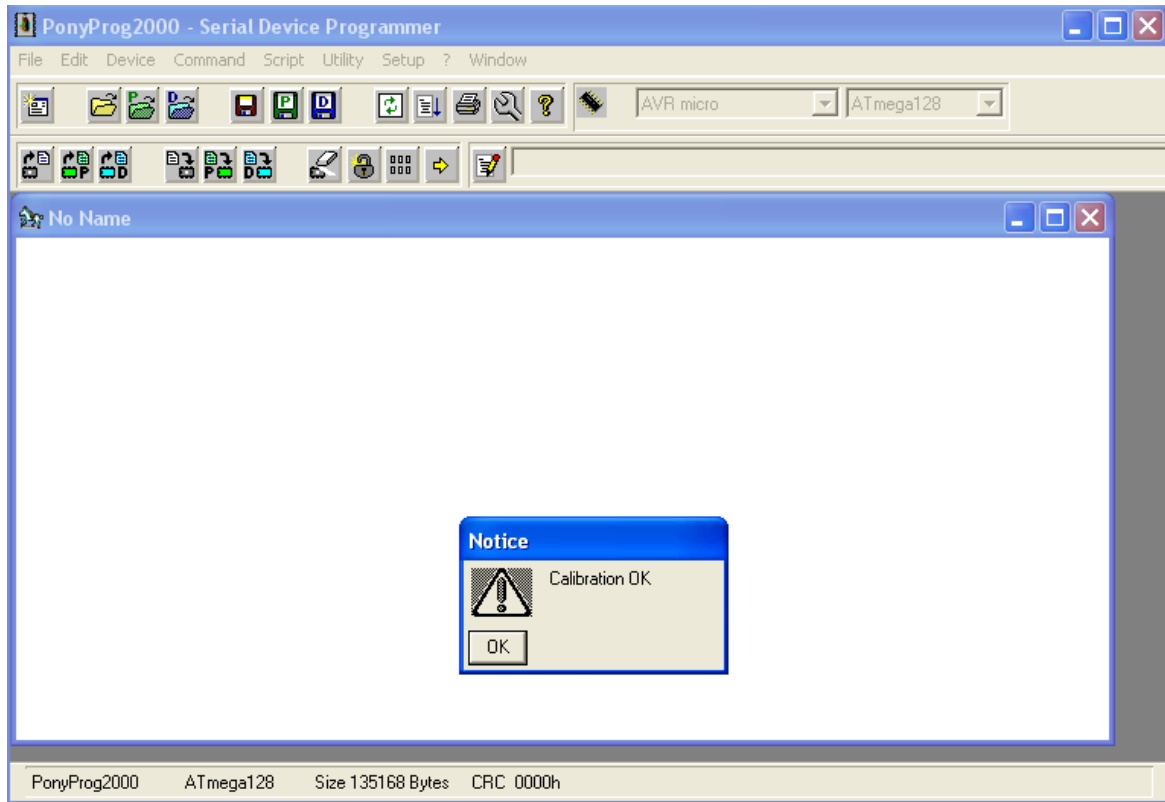


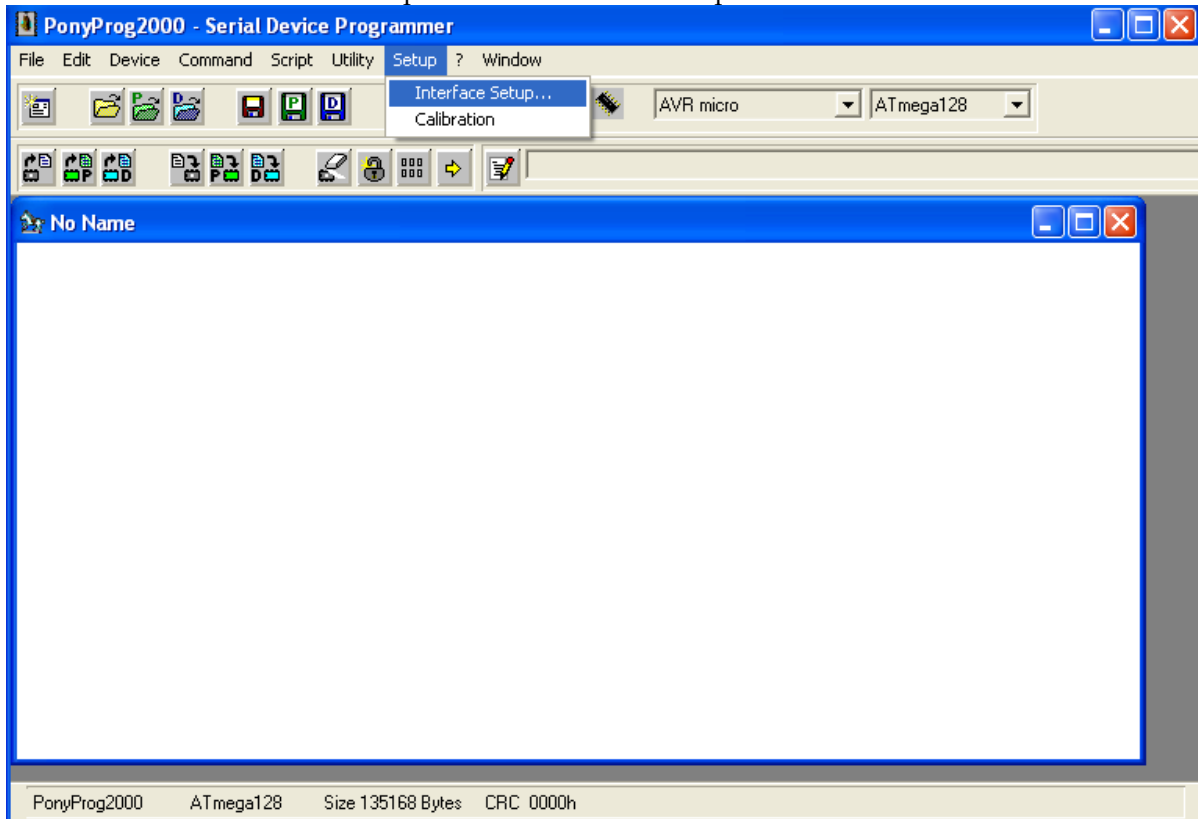
How to install and use AVR-PG2

Download PonyProg from the link at our web page (or at <http://ponyprog.sourceforge.net>) and install it. After the installation is complete you should calibrate it with your PC. In PonyProg – from menu Setup – choose „Calibration“:

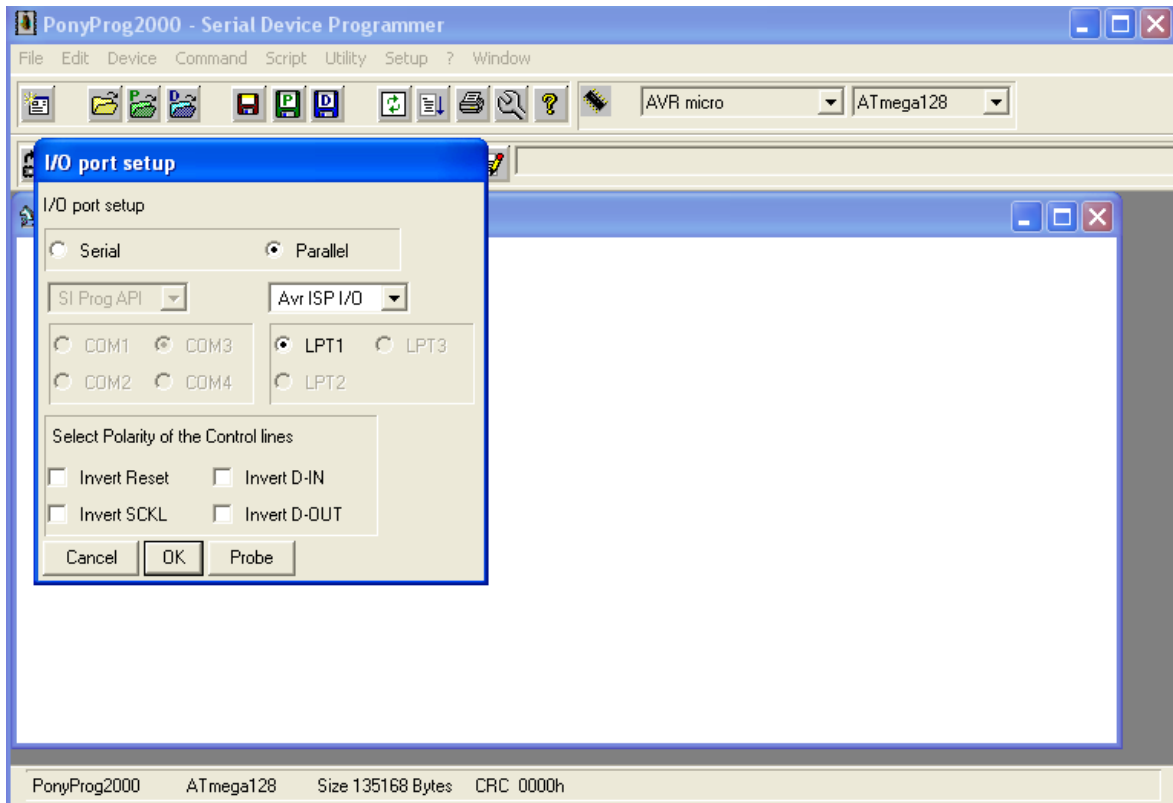




After the calibration is complete – you should make some configurations for the interface.
For AVR-PG2 – in menu Setup – choose – Interface Setup...

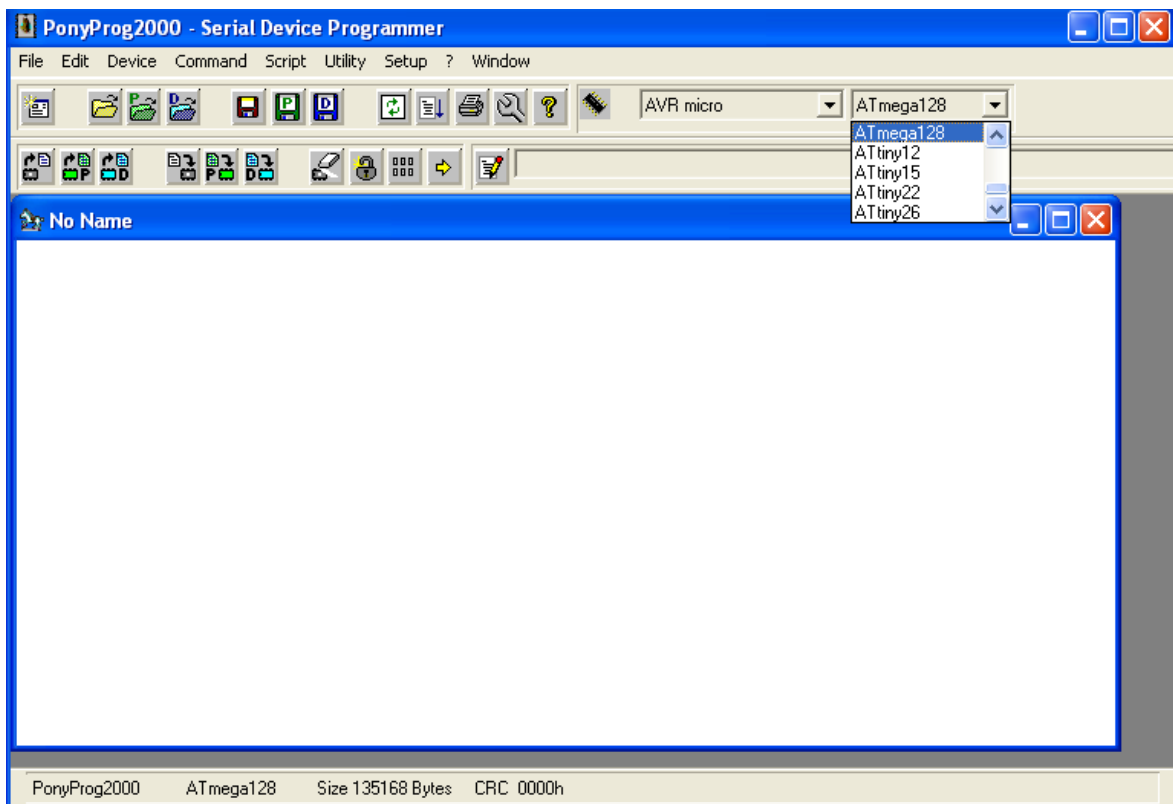


The following window will appear:



You should tick „Parallel“, the number of the AVR-PG2 LPT Port (at this example it is LPT1) and select Avr ISP I/O. Click „OK“

Now you should choose your Microcontroller from menu Device, or as it shown at the next picture:



Now from File – „Open Device File...“ you can load your „*.hex“ file and from „Command“ - „Write all“ to program the Microcontroller.

For more information about how to work with PonyProg – read the „Help“ menu.